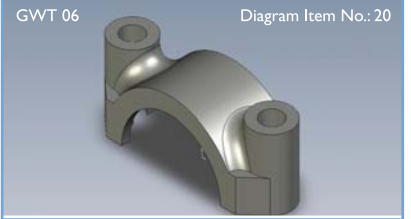
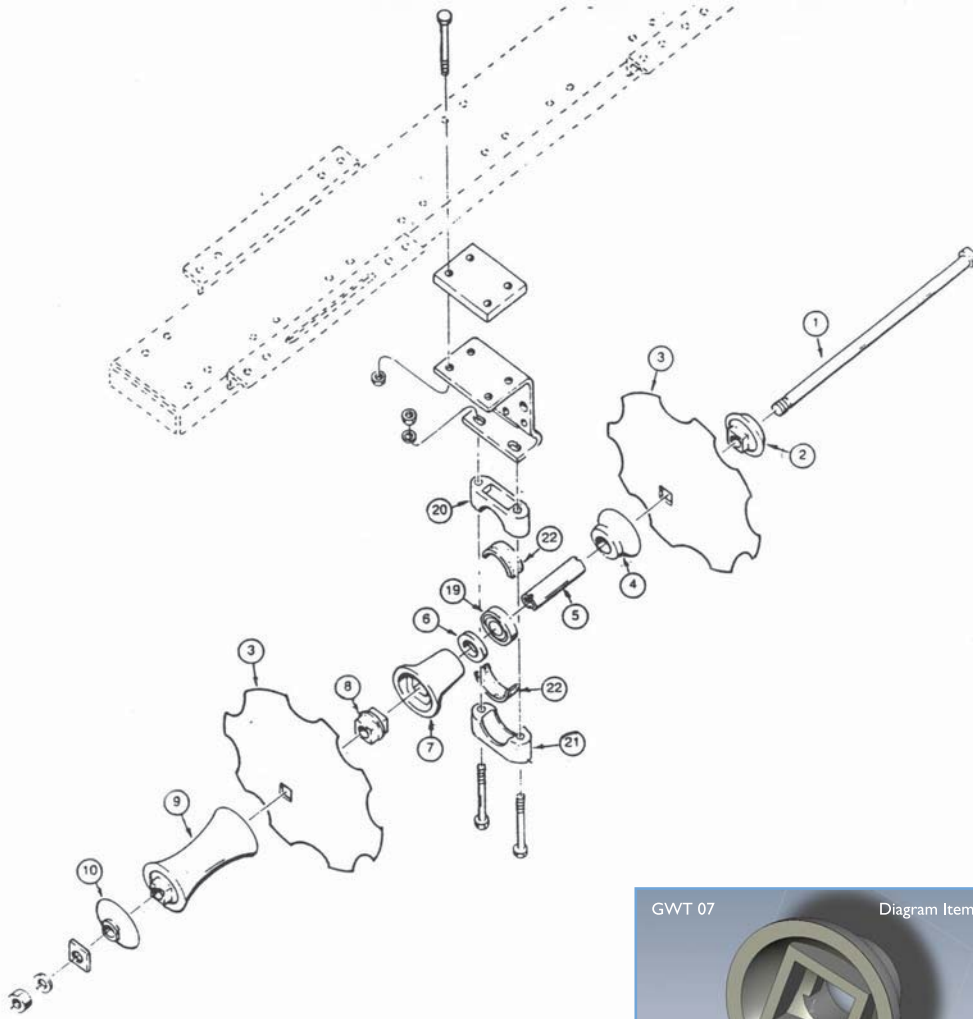


IHC 3-5 OFFSET COMPONENTS

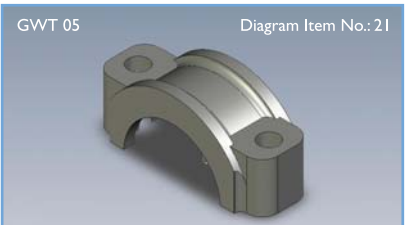


IHC 3-5



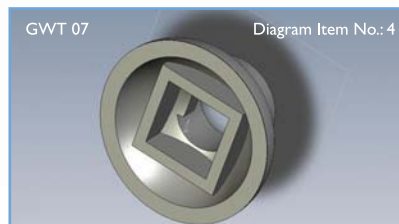
GWT 06 Diagram Item No.: 20

GW481335RI Bearing Clamp - Upper



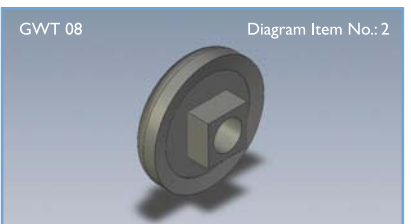
GWT 05 Diagram Item No.: 21

GW806052RI Bearing Clamp - Lower



GWT 07 Diagram Item No.: 4

GW805809RI Spool Bearing with Concave



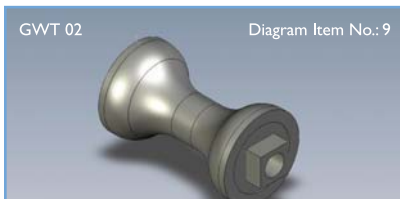
GWT 08 Diagram Item No.: 2

GW806049RI Arbor Bolt Washer - Male



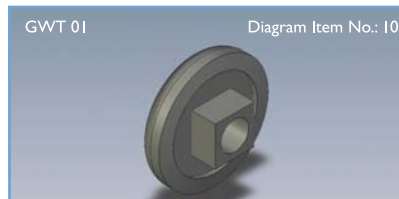
Diagram Item No.: 19

GW958334R9I Bearing



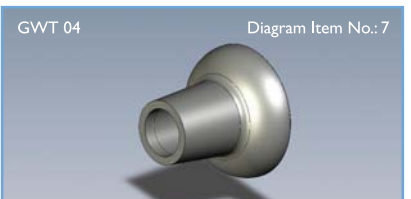
GWT 02 Diagram Item No.: 9

GW490536RI Spacing Spool



GWT 01 Diagram Item No.: 10

GW805807RI Arbor Bolt Washer - Female



GWT 04 Diagram Item No.: 7

GW805808RI Spool Bearing with Convex



Diagram Item No.: 5

GW806051RI Driver Tube

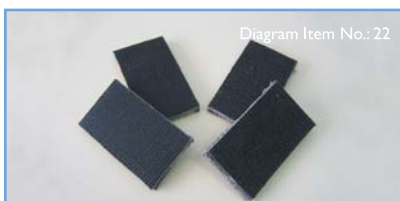


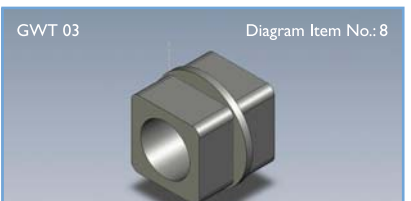
Diagram Item No.: 22

GW481334RI-4 Bearing Rubber Strip - 4 Pack



Not Illustrated

GW644361RI Mud Scraper Blade Only



GWT 03 Diagram Item No.: 8

GW481328RI Driver Lock

*All parts shown on this brochure are non-genuine.

PART NUMBER	DESCRIPTION
GW805805RI	Gang Bolt - 1486mm long.
GW805806RI	Gang Bolt - 2020mm long.

A 24 plate unit uses: 4 x GW 805805RI

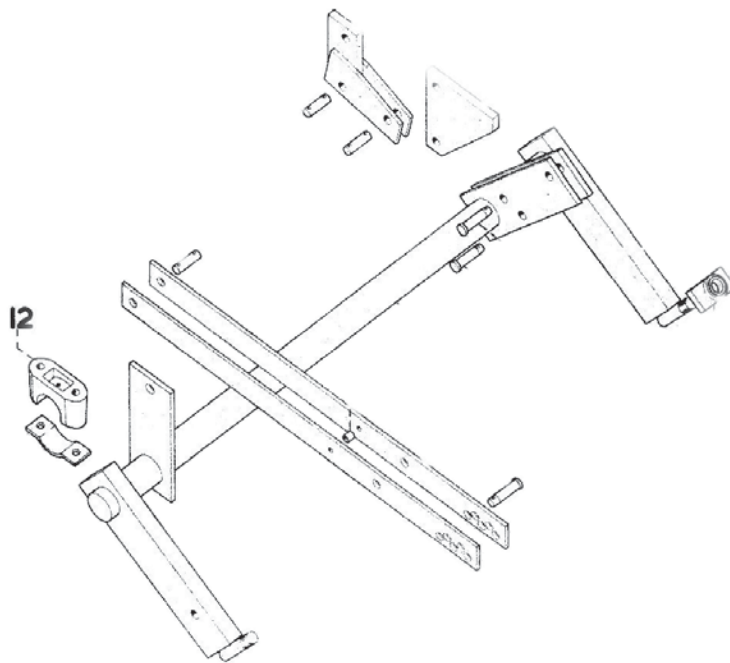
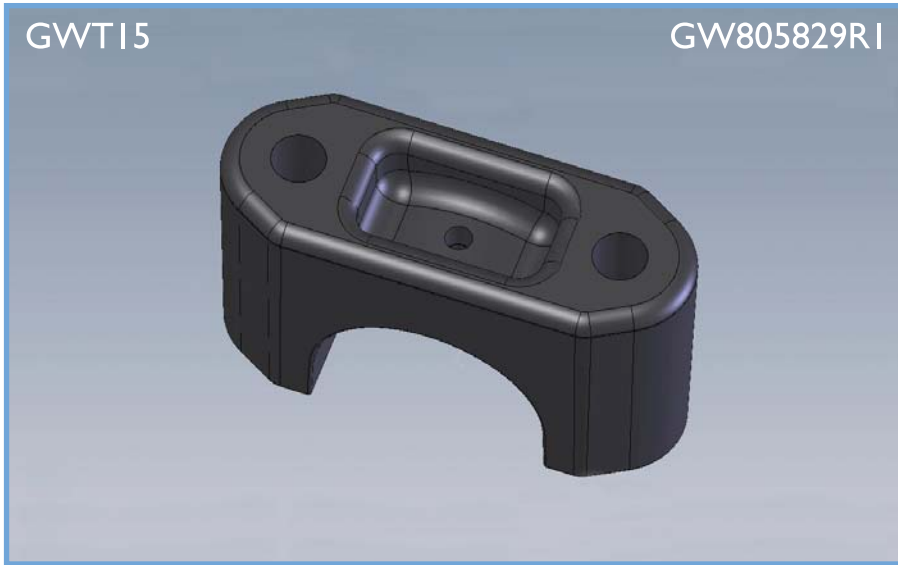
A 28 plate unit uses: 2 x GW 805805RI & 2 x GW 805806RI

A 32 plate unit uses: 4 x GW805806RI

IHC 3-5 OFFSET COMPONENTS

GWT15

GW805829R1



PART NUMBER	DESCRIPTION	CASTING PART No.	DIAGRAM No.
GW805829R1	Rockshaft Casting (includes grease nipple)	GWT 15	12

*All parts shown on this brochure are non-genuine.

For further information, contact:



TOOWOOMBA
 Cnr Buckland and Yaldwyn Streets
 Toowoomba Queensland 4350
Phone: (07) 4636 9150
Fax: (07) 4636 9170

BENDIGO
 Furness Street
 Kangaroo Flat Victoria 3555
Toll Free - Phone: 1800 087 871
Toll Free - Fax: 1800 087 971



Email: info@gwtillage.com.au Web: www.gwtillage.com.au